

**OUR SCHOOL IS RELOCATING TO KA`ANAPALI...SOON!
FAQ'S**

Why is the school moving from Kapalua to Ka`anapali?

We are very grateful to Sacred Hearts Mission Church and our neighbors for accommodating our urgent relocation due to the Lahaina wildfires. Our families have been very understanding of the temporary accommodations; however, we wanted a larger and more comfortable space that feels more like a school and provides an in-classroom learning environment with a standard Monday through Friday schedule for all of our students.

When will the school move from Kapalua to Ka`anapali?

The Fall 2024 semester will commence at the Ka`anapali site. The renovation is expected to finish mid-summer allowing us ample time to be ready for the start of the new school year.

Why was a Ka`anapali site selected?

After a number of temporary West Maui sites were considered, Ka`anapali was selected for its ease of access, location and ample space to accommodate our educational needs. As a bonus, it also boasts a beautiful surrounding golf course and view. The Ka`anapali Operators Association and property owner have been very accommodating and welcoming.

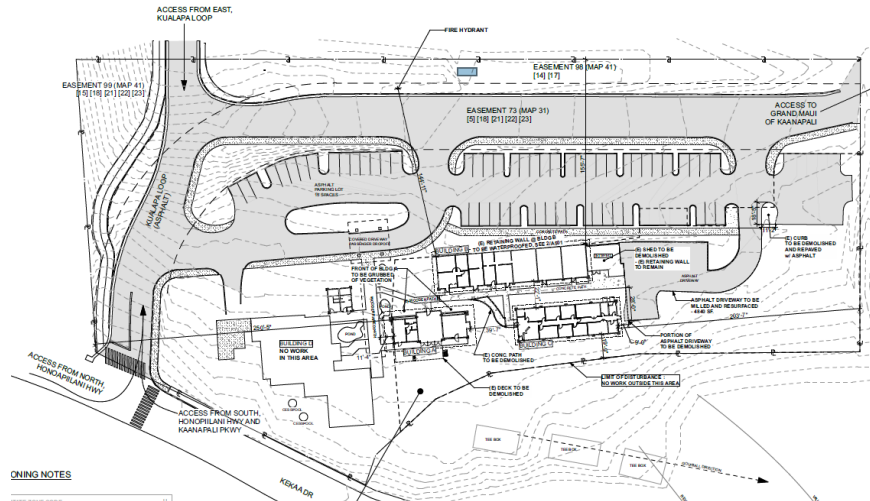
The site is located at 2530 Kekaa Drive. Google Earth Map link: <http://tinyurl.com/bdhpzyu2>



What will be different at the Ka`anapali site?

The school is leasing a portion of the property to accommodate 11 air-conditioned classrooms in 3 existing buildings, outdoor eating areas, air conditioned restroom trailers, grass play areas, half-court basketball court and spaces for administration and faculty, counseling and maintenance, all within the school's fence line. The property has a designated drop/off pickup area along with ample parking.

In class-room education will be available from K – 12th grade with a goal to add an Early Learning Center for Pre-K in the near future.



How does this move effect tuition and tuition assistance?

We are delighted to share that our tuition rates will always remain competitive, while still offering an outstanding education. We highly encourage all current and potential students to apply for tuition assistance. Through generous community donations and grants received post wildfire, our goal is to extend financial support to all those in need.

For tuition information Link: <https://www.shsmaui.org/admissions/tuition-fees.cfm>

For tuition assistance, an application is required. Please complete no later than March 1, 2024 to be considered. Link: <https://www.shsmaui.org/admissions/financial-aid.cfm>

How long will the school operate in Ka`anapali before moving back to Lahaina?

As you know, the restoration and rebuilding of Lahaina will be a long and arduous process. Government and private entities have shared it could be 3 - 5+ years to rebuild, but there are many factors that determine this timeline, many of which are not controlled by our Church and School. However, the Diocese is a highly proactive organization, and the Bishop has assembled a Maria Lanakila/Sacred Hearts School strategy team consisting of members of the Diocese’s Finance Council and other highly regarded professionals in real estate, finance, engineering, and education, from Maui and on Oahu. They will be working closely with Father Kuriokose Nadooparambil (aka Father K) and Tonata Lolesio, Principal, to design, permit and construct as expeditiously as possible and further enhance the school with new state-of-the-art educational facilities.

Will there be fundraising opportunities?

Yes. Both the temporary school at Ka`anapali and the rebuilding of the permanent school will require financial support. Our team is already working with insurance and FEMA to maximize coverage, however we are expecting further financial support will be needed. Once this is determined, we will be sure to communicate this with you.



In the meantime, we do have our **\$4 Million Tuition Assistance Campaign** ongoing through Thanksgiving 2024. As of February 26, 2024 we have raised \$1.7 Million and we need help to reach our final goal. Please share this link and encourage your family, friends, and colleagues to support education. Link: <https://hawaiicatholiccommunityfoundation.org/shs-tuition-assistance-1>

How can I help?

There are many ways you can help now and in the future. Here are just a few ideas.

- **Volunteer:** Be sure to connect with your grade teacher or Tonata Lolesio, Principal, to find out how you can help volunteer in the classroom, at field trips, and events.
- **Enrollment:** Highly encourage current and prospective parents and their students to attend SHS and apply for tuition assistance. Share your great experience at SHS!
- **Sign up** to receive our e-news including site updates simply email Yvette Richard at yrichard@shsmaui.org.
- **Follow us** and encourage others to follow us on social media: Facebook at <https://www.facebook.com/SHSmaui1862> , Instagram and LinkedIn (coming soon)
- **Fundraise:** Please share the link to our \$4 Million Tuition Assistance Campaign. We will also have other fundraising opportunities announced in the near future.

Have further questions? Please feel free to reach out to us any time.

| | |
|--------------------------|--|
| Principal : | Tonata Lolesio tlolesio@shsmaui.org |
| Admissions: | Tiffany Mai tmai@shsmaui.org |
| Development/Fundraising: | Yvette Richard yrichard@shsmaui.org |